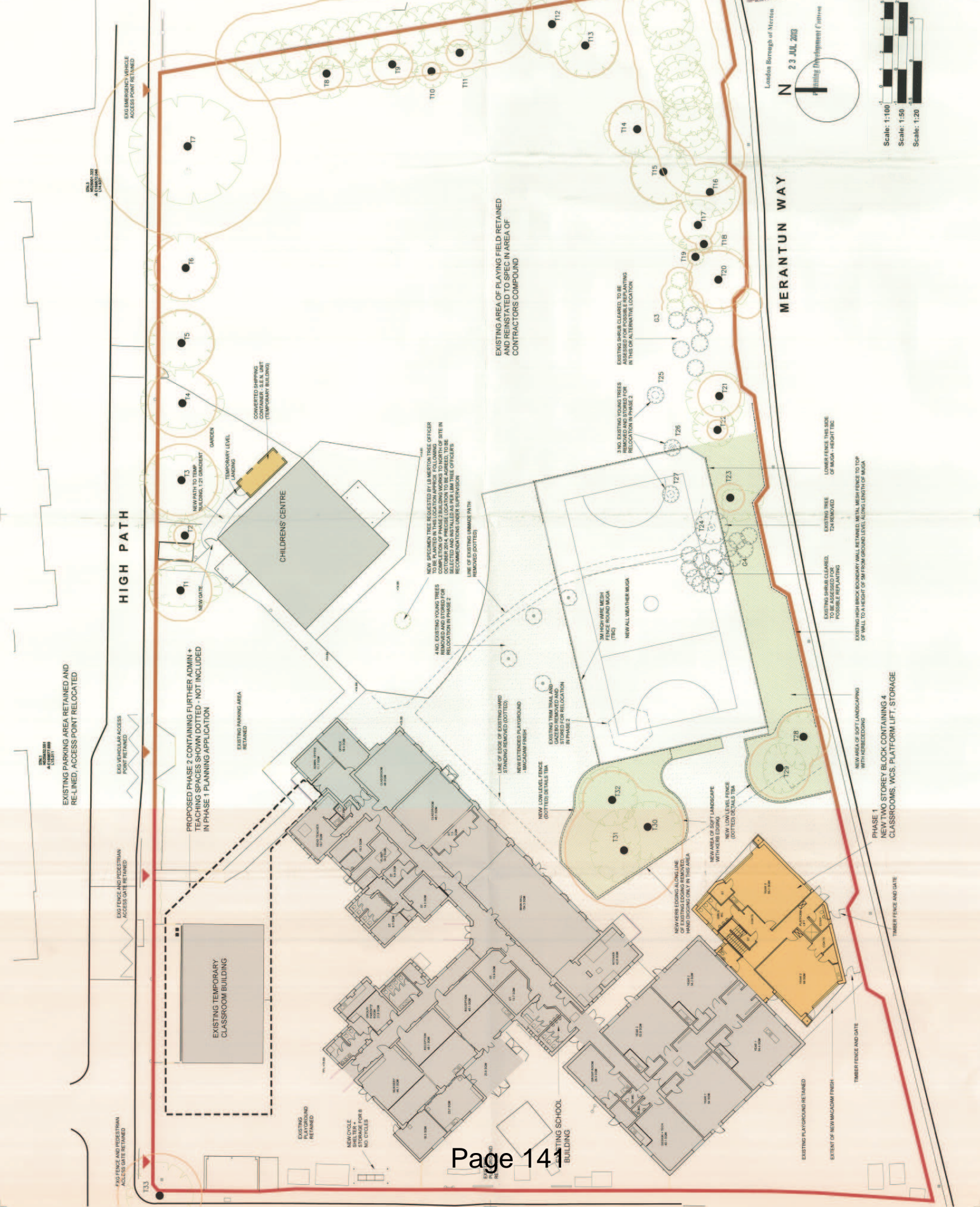


Notes:
 Report all discrepancies, errors and omissions.
 Verify all dimensions on site before commencing any work or preparing any
 drawings. Do not rely on the drawings as a substitute for a site visit.
 All drawings, comments and amendments are to be made with all the relevant
 details. Standards, Codes of Practice, and appropriate manufacturer's
 literature should be consulted for all materials and methods.
 For all technical work, see relevant drawings.
 This drawing and design are copyright of PELLINGS LLP



PLANNING

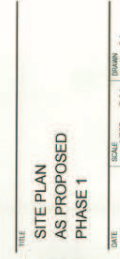
| No | Date | Description |
|----|------------|----------------------------|
| 1 | 15/07/2019 | ISSUED FOR COMMENT |
| 2 | 15/07/2019 | REVISIONS TO TREE SCHEDULE |
| 3 | 15/07/2019 | REVISIONS TO TREE SCHEDULE |
| 4 | 15/07/2019 | REVISIONS TO TREE SCHEDULE |
| 5 | 15/07/2019 | REVISIONS TO TREE SCHEDULE |
| 6 | 15/07/2019 | REVISIONS TO TREE SCHEDULE |
| 7 | 15/07/2019 | REVISIONS TO TREE SCHEDULE |
| 8 | 15/07/2019 | REVISIONS TO TREE SCHEDULE |
| 9 | 15/07/2019 | REVISIONS TO TREE SCHEDULE |
| 10 | 15/07/2019 | REVISIONS TO TREE SCHEDULE |
| 11 | 15/07/2019 | REVISIONS TO TREE SCHEDULE |
| 12 | 15/07/2019 | REVISIONS TO TREE SCHEDULE |
| 13 | 15/07/2019 | REVISIONS TO TREE SCHEDULE |
| 14 | 15/07/2019 | REVISIONS TO TREE SCHEDULE |
| 15 | 15/07/2019 | REVISIONS TO TREE SCHEDULE |
| 16 | 15/07/2019 | REVISIONS TO TREE SCHEDULE |
| 17 | 15/07/2019 | REVISIONS TO TREE SCHEDULE |
| 18 | 15/07/2019 | REVISIONS TO TREE SCHEDULE |
| 19 | 15/07/2019 | REVISIONS TO TREE SCHEDULE |
| 20 | 15/07/2019 | REVISIONS TO TREE SCHEDULE |
| 21 | 15/07/2019 | REVISIONS TO TREE SCHEDULE |
| 22 | 15/07/2019 | REVISIONS TO TREE SCHEDULE |
| 23 | 15/07/2019 | REVISIONS TO TREE SCHEDULE |
| 24 | 15/07/2019 | REVISIONS TO TREE SCHEDULE |
| 25 | 15/07/2019 | REVISIONS TO TREE SCHEDULE |
| 26 | 15/07/2019 | REVISIONS TO TREE SCHEDULE |
| 27 | 15/07/2019 | REVISIONS TO TREE SCHEDULE |
| 28 | 15/07/2019 | REVISIONS TO TREE SCHEDULE |
| 29 | 15/07/2019 | REVISIONS TO TREE SCHEDULE |
| 30 | 15/07/2019 | REVISIONS TO TREE SCHEDULE |
| 31 | 15/07/2019 | REVISIONS TO TREE SCHEDULE |
| 32 | 15/07/2019 | REVISIONS TO TREE SCHEDULE |
| 33 | 15/07/2019 | REVISIONS TO TREE SCHEDULE |



Pellings LLP
 100, 101, 102, 103, 104, 105, 106, 107, 108, 109, 110, 111, 112, 113, 114, 115, 116, 117, 118, 119, 120, 121, 122, 123, 124, 125, 126, 127, 128, 129, 130, 131, 132, 133, 134, 135, 136, 137, 138, 139, 140, 141, 142, 143, 144, 145, 146, 147, 148, 149, 150, 151, 152, 153, 154, 155, 156, 157, 158, 159, 160, 161, 162, 163, 164, 165, 166, 167, 168, 169, 170, 171, 172, 173, 174, 175, 176, 177, 178, 179, 180, 181, 182, 183, 184, 185, 186, 187, 188, 189, 190, 191, 192, 193, 194, 195, 196, 197, 198, 199, 200, 201, 202, 203, 204, 205, 206, 207, 208, 209, 210, 211, 212, 213, 214, 215, 216, 217, 218, 219, 220, 221, 222, 223, 224, 225, 226, 227, 228, 229, 230, 231, 232, 233, 234, 235, 236, 237, 238, 239, 240, 241, 242, 243, 244, 245, 246, 247, 248, 249, 250, 251, 252, 253, 254, 255, 256, 257, 258, 259, 260, 261, 262, 263, 264, 265, 266, 267, 268, 269, 270, 271, 272, 273, 274, 275, 276, 277, 278, 279, 280, 281, 282, 283, 284, 285, 286, 287, 288, 289, 290, 291, 292, 293, 294, 295, 296, 297, 298, 299, 300, 301, 302, 303, 304, 305, 306, 307, 308, 309, 310, 311, 312, 313, 314, 315, 316, 317, 318, 319, 320, 321, 322, 323, 324, 325, 326, 327, 328, 329, 330, 331, 332, 333, 334, 335, 336, 337, 338, 339, 340, 341, 342, 343, 344, 345, 346, 347, 348, 349, 350, 351, 352, 353, 354, 355, 356, 357, 358, 359, 360, 361, 362, 363, 364, 365, 366, 367, 368, 369, 370, 371, 372, 373, 374, 375, 376, 377, 378, 379, 380, 381, 382, 383, 384, 385, 386, 387, 388, 389, 390, 391, 392, 393, 394, 395, 396, 397, 398, 399, 400, 401, 402, 403, 404, 405, 406, 407, 408, 409, 410, 411, 412, 413, 414, 415, 416, 417, 418, 419, 420, 421, 422, 423, 424, 425, 426, 427, 428, 429, 430, 431, 432, 433, 434, 435, 436, 437, 438, 439, 440, 441, 442, 443, 444, 445, 446, 447, 448, 449, 450, 451, 452, 453, 454, 455, 456, 457, 458, 459, 460, 461, 462, 463, 464, 465, 466, 467, 468, 469, 470, 471, 472, 473, 474, 475, 476, 477, 478, 479, 480, 481, 482, 483, 484, 485, 486, 487, 488, 489, 490, 491, 492, 493, 494, 495, 496, 497, 498, 499, 500, 501, 502, 503, 504, 505, 506, 507, 508, 509, 510, 511, 512, 513, 514, 515, 516, 517, 518, 519, 520, 521, 522, 523, 524, 525, 526, 527, 528, 529, 530, 531, 532, 533, 534, 535, 536, 537, 538, 539, 540, 541, 542, 543, 544, 545, 546, 547, 548, 549, 550, 551, 552, 553, 554, 555, 556, 557, 558, 559, 560, 561, 562, 563, 564, 565, 566, 567, 568, 569, 570, 571, 572, 573, 574, 575, 576, 577, 578, 579, 580, 581, 582, 583, 584, 585, 586, 587, 588, 589, 590, 591, 592, 593, 594, 595, 596, 597, 598, 599, 600, 601, 602, 603, 604, 605, 606, 607, 608, 609, 610, 611, 612, 613, 614, 615, 616, 617, 618, 619, 620, 621, 622, 623, 624, 625, 626, 627, 628, 629, 630, 631, 632, 633, 634, 635, 636, 637, 638, 639, 640, 641, 642, 643, 644, 645, 646, 647, 648, 649, 650, 651, 652, 653, 654, 655, 656, 657, 658, 659, 660, 661, 662, 663, 664, 665, 666, 667, 668, 669, 670, 671, 672, 673, 674, 675, 676, 677, 678, 679, 680, 681, 682, 683, 684, 685, 686, 687, 688, 689, 690, 691, 692, 693, 694, 695, 696, 697, 698, 699, 700, 701, 702, 703, 704, 705, 706, 707, 708, 709, 710, 711, 712, 713, 714, 715, 716, 717, 718, 719, 720, 721, 722, 723, 724, 725, 726, 727, 728, 729, 730, 731, 732, 733, 734, 735, 736, 737, 738, 739, 740, 741, 742, 743, 744, 745, 746, 747, 748, 749, 750, 751, 752, 753, 754, 755, 756, 757, 758, 759, 760, 761, 762, 763, 764, 765, 766, 767, 768, 769, 770, 771, 772, 773, 774, 775, 776, 777, 778, 779, 780, 781, 782, 783, 784, 785, 786, 787, 788, 789, 790, 791, 792, 793, 794, 795, 796, 797, 798, 799, 800, 801, 802, 803, 804, 805, 806, 807, 808, 809, 810, 811, 812, 813, 814, 815, 816, 817, 818, 819, 820, 821, 822, 823, 824, 825, 826, 827, 828, 829, 830, 831, 832, 833, 834, 835, 836, 837, 838, 839, 840, 841, 842, 843, 844, 845, 846, 847, 848, 849, 850, 851, 852, 853, 854, 855, 856, 857, 858, 859, 860, 861, 862, 863, 864, 865, 866, 867, 868, 869, 870, 871, 872, 873, 874, 875, 876, 877, 878, 879, 880, 881, 882, 883, 884, 885, 886, 887, 888, 889, 890, 891, 892, 893, 894, 895, 896, 897, 898, 899, 900, 901, 902, 903, 904, 905, 906, 907, 908, 909, 910, 911, 912, 913, 914, 915, 916, 917, 918, 919, 920, 921, 922, 923, 924, 925, 926, 927, 928, 929, 930, 931, 932, 933, 934, 935, 936, 937, 938, 939, 940, 941, 942, 943, 944, 945, 946, 947, 948, 949, 950, 951, 952, 953, 954, 955, 956, 957, 958, 959, 960, 961, 962, 963, 964, 965, 966, 967, 968, 969, 970, 971, 972, 973, 974, 975, 976, 977, 978, 979, 980, 981, 982, 983, 984, 985, 986, 987, 988, 989, 990, 991, 992, 993, 994, 995, 996, 997, 998, 999, 1000

LONDON BOROUGH OF MERTON
 23 JUL 2019

MERTON ABBEY
 PRIMARY SCHOOL



SITE PLAN
 AS PROPOSED
 PHASE 1
 DATE: 23 JUL 2019 @A1
 DRAWN BY: GJ
 752 003 10
 Proposed By: *Awad*
 23/07/19

This page is intentionally left blank